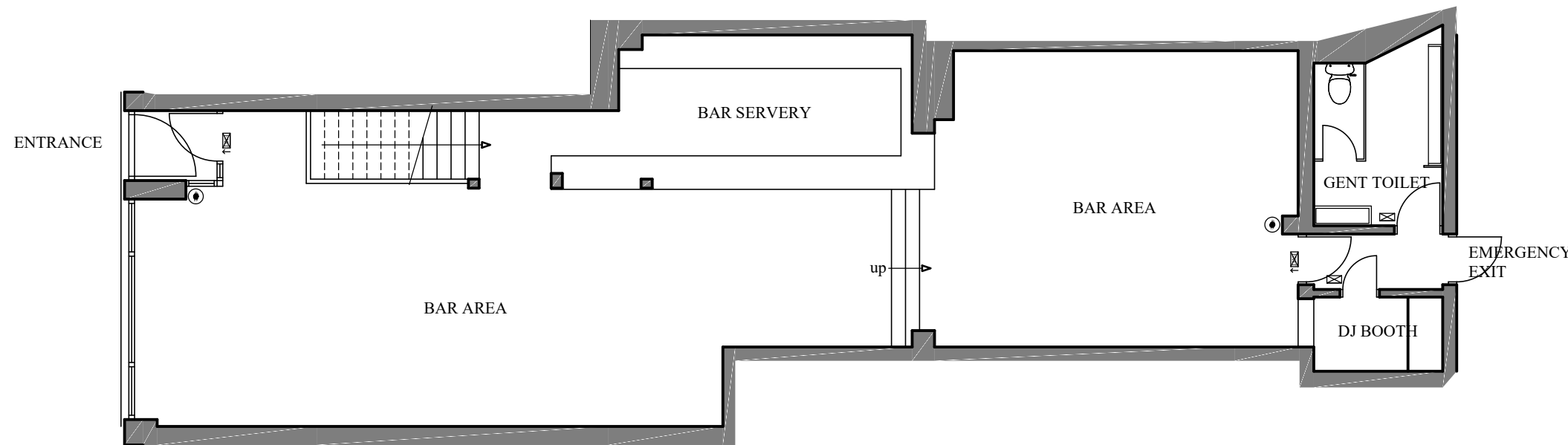
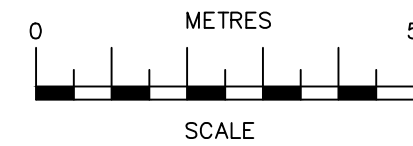


BASEMENT PLAN
(1:50)

- ALARM/EMERGENCY LIGHTING**
LEGEND
- ⊗ Smoke or Heat Detector
 - Emergency Alarm Call Point
 - ⊠ Emergency Light
 - ⊠ Emergency Light with 'EXIT' Sign
 - ⊠ Emergency Light with 'EXIT' Sign and Directional Arrow
 - ⊠ 'EXIT' Sign
 - ⊠ 'EXIT' Sign and Directional Arrow



GROUND FLOOR PLAN
(1:50)

| Date | No | Revision |
|-------------------------------------------------------------------------------------------------------------------------------------------------------------------|--------------|-------------------------------------------------------------------------------------------------------------------|
| <p>Penfold Project Services Epmarket, Wrotham Road, Meopham, Kent, DA13 0JH Telephone: 01474 816690 e-mail: apenfold448@btinternet.com</p> | | |
| Job Title: | | <p>KINGS HEAD P.H. 8-9 KING STREET GRAVESEND KENT DA12 2EB</p> |
| Dwg Title: | | <p>BASEMENT AND GROUND FLOOR PLANS AS EXISTING</p> |
| Scale: | 1:100 @ A3 | |
| Dwg No.: | 10 | |
| Date: | January 2018 | |