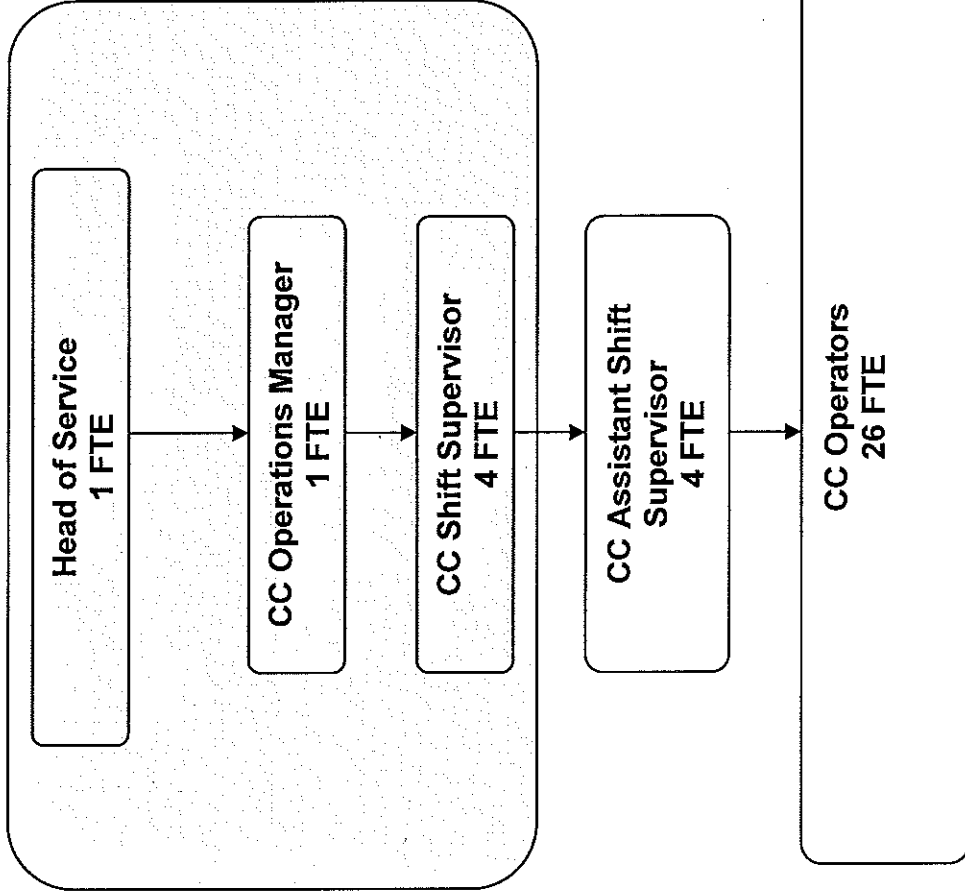


**Appendix 3: Provisional CCTV Services' Partnership Structure**

**Medway Control Centre  
CCTV Partnership - Organisation Structure**



**Cost Split Between CCTV Shared Services Partners  
(4) & Medway Commercial Division (5<sup>th</sup> Financial  
Contributor)**

**Medway Control Centre – Organisation Structure**

The Head of the Service, Control Centre Operations Manager and the Control Centre Shift Supervisors will be paid by the four partners, (Medway Public Realm CCTV, GBC, MBC, Swale) and the 5<sup>th</sup> equal financial contributor being the Medway Commercial Services.

The four Assistant Control Centre Supervisors will be paid directly by Medway as their key role will be to monitor Medway's commercial services activities

Operators will be divided up into different teams according to the needs and each partner will pay for the number of operators used.

Medway – 10.5  
Maidstone – 5.5  
Gravesham – 5  
Swale – 5