

2019-
2022

Dartford and Gravesham Community Safety Strategy



Produced by Dartford and Gravesham Community Safety Partnership



Introduction

Dartford and Gravesham Community Safety Partnership (CSP) is made up of statutory agencies brought together under a shared responsibility placed upon them by the Crime and Disorder Act 1998. The Act has been amended over the years since its introduction to include responsibilities to not only reduce crime but to tackle anti-social behaviour (ASB), recognising that this can have a considerable impact on local communities, and to lessen the reoffending of those who repeatedly commit crime.

Key statutory partners have all faced reductions in expenditure and resources at a time when statutory requirements placed on Partnerships have increased and the community safety landscape is changing. Certain strands of criminal activity that have become national are challenging but the Partnership will aim to extend its joint working to bring in the relevant expertise and skills to help us tackle them, as well as addressing our local priorities. We will ensure that our progress is monitored closely throughout the life of this strategy, with a full review at the end of each year to enable us to respond appropriately and effectively to changing circumstances.

Our Partnership

Dartford and Gravesham CSP has a strong track record of achievement in reducing crime and ASB and improving community safety locally. This has only been possible because of the excellent working relationship between the specified authorities that make up the Partnership. Currently these are:

- Kent County Council;
- Dartford Borough Council;
- Gravesham Borough Council;
- Kent Police;
- Kent Fire and Rescue Service;
- Dartford, Gravesham and Swanley Clinical Commissioning Group;
- Kent Surrey and Sussex Community Rehabilitation Company;
- Office of the Kent Police and Crime Commissioner.

These agencies all have a statutory duty to work together to tackle crime and disorder however, very significant contributions are made to Partnership activities by a host of voluntary and private sector groups, charitable organisations and local community groups, without which our ability to tackle community safety priorities would be much more restricted. Each year the CSP has a legal duty to complete a Strategic Assessment of the levels of crime and ASB being experienced in our two Boroughs. The purpose of the Assessment is to:

- determine whether priorities remain the same or whether there are new priorities to address;
- highlight performance, progress and achievements against commitments made in the previous Community Safety Plan; and,
- identify key crime, disorder and ASB risks and threats to our local communities.

As part of moving forward and developing a new Community Safety Strategy, the Partnership has also taken the opportunity to look back at recent successes which have laid the foundation for a number of initiatives, some of which will need to continue to be developed over the next few years. The following highlights some of our most recent key successes.

Key Partnership Successes

Violent Crime and Domestic Abuse

- Funding (£248,242 over 3 years to March 2020) secured from the Home Office Violence Against Women and Girls (VAWG) Transformation Fund to deliver the Altogether Safer Project across Dartford and Gravesham establishing an Out of Hours IDVA Service at North Kent Police Station; delivering the Choose Respect Programme to boys and young men aged 11-18 years and working with BAME and hard to reach victims to encourage accessing of services.
- Secured £137,880 from the MHCLG Domestic Abuse Services Fund to run the Step Change Project (from early 2019) to provide intensive, wrap-around the family support to victims of domestic abuse with complex needs and for 1:1 and group support for their children.
- Targeted work through each Borough's multi-agency Vulnerability Forums to assist individuals with complex needs who are particularly vulnerable to safeguard them from harm and support them in accessing treatment services and accommodation.
- Making full use of both permanent and rapid deployment CCTV camera systems in town centres to deter ASB and more serious offending behaviour, capture evidence and improve public safety.
- Established local multi-agency Serious Youth Violence and Exploitation Groups to develop effective plans to provide interventions for young people identified as being involved or at risk of involvement in criminal activity.

Anti-Social Behaviour (incorporating criminal damage related to ASB)

- Joint work between Dartford CSU and Kent Police to tackle ASB associated with street drinking to encourage individuals into treatment and support services.
- Operation Ransom (Dartford) to address ASB caused by nuisance bikes through intelligence gathering to identify the riders, messaging highlighting offences and impact on local communities and through education delivered by the Youth Engagement PCSO.
- Support provided to the countywide operations and successful multi-agency action in Dartford to address fly-tipping and environmental issues, targeting and using formal action against offenders.
- Creation of a Safer Place Officer Team based within Gravesham CSU to provide a visible uniformed presence in the town centre, enforce the conditions of Gravesham's Public Space Protection Order, issue fines for littering and dog fouling and signpost homeless people to services.
- Interventions and enforcement action targeting adults and young people engaging in ASB to help change and reduce the impact of their behaviour.
- Raising awareness of the dangers of fire raising and delivering fire safety messages.

Acquisitive and Property Crime

- Delivery of seasonal initiatives raising awareness and providing advice to the public on steps to take to reduce the risk of burglary/guard against shed and garage breaks, motor vehicle crime and theft e.g. Christmas Safety Shop, Safer Summer Campaigns.
- Use of G-Safe Exclusion Orders and D-TAC Community Protection Warning letters/Notices to deter persistent shoplifters from entering member premises and ensuring that there is good communication between both our Schemes and with other Schemes in the county to tackle cross-border offending.
- Joint work with KCC Wardens and Trading Standards to engage with and raise awareness of residents/communities in areas where issues such as scams and distraction burglary are more prevalent (e.g. elderly residents, residents affected by thefts of Asian gold).

Substance Misuse

- Joint Police and Council Licensing Team visits to licensed premises in both Dartford and Gravesham to ensure adherence to licensing conditions and to encourage the responsible sale of alcohol.
- Referral of vulnerable individuals at risk of exploitation to local Vulnerability Groups to safeguard them against harm e.g. risk of cuckooing of their property due to substance dependency, and share intelligence to help bring offenders to justice.
- Use of enforcement powers e.g. Criminal Behaviour Order, to take action against identified persistent offenders engaging in ASB where their behaviour is alcohol-related.

- Targeted outreach work delivered by KCC Youth Workers and The Gr@nd Project Youth Workers to engage with young people at risk of drug-related ASB.
- Using G-Safe Exclusion Orders and D-TAC Community Protection Warning letters/Notices for those individuals repeatedly involved alcohol or drug-related crime from member premises.

Serious and Organised Crime

- Established multi-agency Organised Crime forums with a broad representation of agencies to share intelligence/take joint action to disrupt Organised Crime Groups (OCGs) operating in our area.
- Joint work between CSUs and Early Help Teams to commission educational interventions to prevent young people being drawn into gang and drug-related activity through 1:1 and group work.
- Working with the Metropolitan Police staff and London Boroughs to improve information sharing, to identify young people who may live, socialise, go to school, or be living in care cross-border, to protect them from harm and/or being drawn into gang-related or other serious criminal activity.
- Training delivered to partner agency representatives promote a better understanding of how OCGs operate, key categories of SOC and identification of good practice.
- Publishing of Modern Slavery and Human Trafficking Statements to raise awareness and guard against such activity presenting within local supply chains.
- Participation in the Kent and Medway Prevent Delivery Group and in Channel Panels following referrals and awareness-raising amongst staff to mitigate against security risks.

Reducing Reoffending

- Joint working between partner agencies through the IOM process in order that potential issues that could affect an individual about to be released can be identified early on and tailored interventions developed to address factors influencing offending behaviour e.g. substance dependency.
- Joint work with KSS CRC and the use of Community Payback Teams in both Boroughs.
- Delivery of a restorative justice programme for young people, GLOW (led by G-Safe and KCC Community Wardens) for first-time shoplifters (young people and adults).
- Targeted outreach youth work and programmes to engage with young people involved in repeat ASB to change their behaviour and divert them into constructive activity e.g. Climbing Fit.
- Use of a range of enforcement powers e.g. Acceptable Behaviour Agreements, Community Protection Warnings and Notices, Criminal Behaviour Orders, to prevent reoffending.

Protecting Vulnerable People and Strengthening Communities

- Continued development and delivery of the No Space for Hate Campaign through joint work with The Gr@nd Project and Youth Advisory Group, awareness raising sessions, a hate crime survey conducted in schools and through community events.
- Successful bid to MCHLG Migration Fund for a Gravesham project, Altogether Stronger that includes: i) a youth project to integrate and safeguard young people from harm; ii) delivery of music and food cross-community events; iii) training and awareness raising on hate crime.
- Vulnerability Groups established to ensure that intelligence is fully shared regarding high risk of harm individuals and multi-agency plans delivered to try to meet their needs.
- Second successful bid to MHCLG Migration Fund with London Borough of Havering acting as the Lead Authority, partnered by Dartford, Gravesham and Bexley to provide access to the Origins Atlas software system to develop our intelligence in respect of migration and community cohesion.
- Targeted work with women and girls from BAME backgrounds through the work of the Altogether Safer VAWG Project with a focus on the development of peer support groups in each Borough.
- Councils continue to engage with emerging communities through the provision of publicly funded cultural and community events such as local Festivals, various outdoor cinema and theatre shows, Festival of Light, St. Georges Day Parade.
- Dartford Civil Enforcement Officers regularly attend schools in the school safety van at relevant times to ensure adherence to safety measures such as zig-zag markings to reduce risks for school children and their families.

Our New Objectives

How have we identified our objectives?

The Partnership has a statutory duty to produce an annual Strategic Assessment to measure our performance towards meeting our CSP objectives in tackling our agreed community safety priorities. The Assessment collates considerable information and data from a broad range of partner agencies, detailing levels of crime and ASB that enables the CSP to consider the current position and any changing circumstances or emerging issues that could necessitate different approaches or interventions.

Certain other considerations have been taken into account in addition to recorded figures and that have helped to identify those areas of work that now form the priorities contained in this new Community Safety Strategy 2019-2022. These considerations include:

- Volume – level of offences as a proportion of total crime;
- Level of harm – impact offences have on victims and communities;
- Community concern – level of priority which local people would attribute to a particular offence;
- Partnership added-value – extent to which multi-agency working can enhance the ability of agencies to tackle a particular strand of offending behaviour;
- Trend analysis – giving due consideration to patterns of increase in an offence type (where it is possible to ascertain).

In addition, existing and emerging national priorities, legal obligations faced by CSPs, policing priorities included in both the Kent Police Control Strategy and the Police and Crime Commissioner's Policing and Crime Plan, are also taken into account.

Public Opinion

The need for local people to be given an opportunity to voice their views and opinions is recognised as crucially important in achieving long-term change and improving community safety. Whilst statistics can provide a good foundation in identifying priorities, relying on them alone may result in issues that are key concerns in local neighbourhoods being missed.

A public opinion survey was conducted between 18 February and 3 March 2019 which was made available on both the Gravesham and Dartford Borough Council websites and via each Borough's social media platforms including Facebook, Instagram and Twitter. People who either live or work in Dartford or Gravesham were invited to complete the survey which asked them to identify those community safety issues that, in their experience, were of the greatest concern in their neighbourhood. A total of 420 people responded – 299 (71.19%) of these either lived or worked in Gravesham and 121 (28.81%) of respondents either lived or worked in Dartford.

Respondents were asked to select **the single MOST important issue** in their local area. 407 people answered this question and the vast majority stated that ASB was their main concern – 163 (40.05% of all respondents).

Single most important concern in local areas



Once people had identified what they felt was the most important issue in their area, they were also asked to choose their top 3 concerns within that category with the following results:

Most Important Issue	Top 3 issues within this category
ASB 163 respondents (40% of total)	Of 154 respondents to this question: Fly-tipping 65 (42%) Using/dealing drugs 62 (40%) Noisy/rowdy behaviour 61 (39%)
Property crime 94 respondents (23%)	Of 85 respondents to this question: Residential burglary 81 (95%) Shed/garage breaks 63 (74%) Theft of motor vehicles 49 (57%)
Town centre safety 80 respondents (20%)	Of 71 respondents to this question: Groups gathering on the street 45 (63%) Violence in the evening/NTE 43 (60%) Public place violence 27 (38%)
Violence 37 (10%)	Of 34 respondents to this question: Youth violence 22 (65%) Gun/knife crime 19 (56%) Robbery 16 (47%)
Substance misuse 33 (8%)	Of 29 respondents to this question: Drug dealing 24 (83%) Class A drug use 17 (59%) Cannabis use (45%)

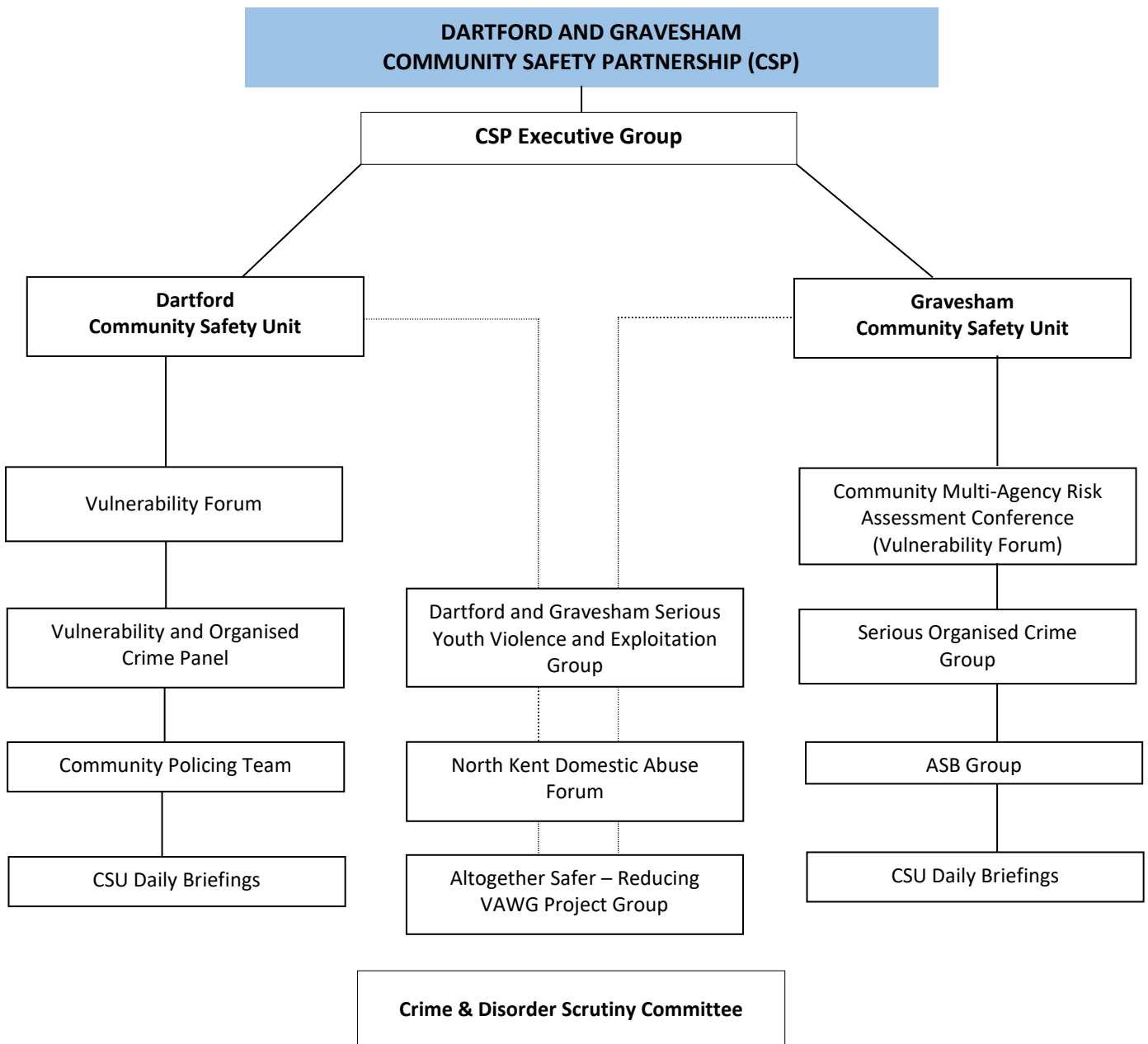
Breakdown of respondents who completed the survey

Age from 342 responses %		Ethnicity from 342 responses %		Gender from 342 responses %	
18-24	3.5%	White British	88.0%	Male	30.5%
25-34	9.0%	White Irish	2.5%	Female	66.5%
35-44	14.5%	White Other	3.0%	Transgender	0.25%
45-54	27.0%	White and Black African	1.0%	Not provided	2.75%
55-64	27.0%	Any other mixed background	0.25%		
65+	17.0%	Indian	1.0%		
Not provided	2.0%	Bangladeshi	0.5%		
		Chinese	0.25%		
		Caribbean	0.25%		
		Other	0.25%		
		Not provided	3.0%		

Governance

The Partnership has been structured to ensure that the priorities in this Strategy can be effectively delivered and that performance and progress is regularly monitored with appropriate checks and balances to keep our work on track. As well as a joint overarching strategic group that brings together statutory agencies at a most senior level, the Partnership has a number of Operational Groups that deliver projects on the ground. Each Borough’s Community Safety Unit (CSU), carries out the day-to-day co-ordination of Partnership activity. The positions of Chair and Vice-Chair of the Partnership are alternated between the two Councils’ Leaders or Lead Member for Community Safety/Public Protection and senior officers representing strategic links to other partnership boards provide co-ordination across the piece.

Partnership Organisational Structure



Further Groups also contributing to the work of the Partnership include: G-Safe, D-TAC, Kent and Medway Prevent Delivery Board and the Dartford and Gravesham Integrated Offender Management (IOM) Meeting.

Priority 1: Violent Crime including Domestic Abuse

Why is this important?

Protecting people from harm has been identified as a priority because the Partnership recognises that personal safety is paramount. Certain offences such as domestic abuse or sexual offences, are known to suffer from under-reporting and significant Partnership work has taken place over a number of years to raise awareness of services and assistance, particularly amongst hard to reach groups and encourage victims to come forward. National and global attention to sexual violence and abuse has generated public debate and this, together with a series of local initiatives that have been helping to fill gaps in services, have contributed to increases in reports to Police and other agencies.

Violence Against Women and Girls (VAWG) is a national priority and considerable work is being undertaken in Dartford and Gravesham through our Home Office funded, Altogether Safer, project. The project has helped to provide the right services at the point of need, carried out work with boys and young men to help break the cycle of VAWG and raised awareness within our local BAME community of support services to help remove cultural barriers to access.

Whilst most serious violent offences remain rare, violent crime (offences of violence against the person, sexual offences and robberies) still accounts for the greatest proportion of total crime in both Dartford and Gravesham (over 40% in each area) and about a quarter of violent offences involve injury to the victim.

What is our focus?

- To continue to raise awareness of VAWG in all its forms, to increase victim confidence to report and seek specialist help;
- To work in partnership with the Local Children's Safeguarding Group to address violence committed against children and young people;
- To ensure that specialist support is available to victims of violence to see them through the justice system to help increase the number of perpetrators brought to justice;
- To safeguard vulnerable adults from the risk of harm;
- To improve our intelligence picture of violence occurring in public places.

The first 12 months: 2019-20 – What will we do?

- Deliver the Altogether Safer Project, including the Out of Hours Police Station based Independent Domestic Violence Advisor Service; the Choose Respect Programme to boys and young men aged 11-18 years and hold the annual female-audience VAWG Listen to our Voices Conference to raise awareness of factors affecting behaviour and influencing domestic abuse;
- Work in partnership with Choices Domestic Abuse Services to deliver the Ministry of Housing Communities and Local Government funded Step Change project to provide a wrap-around-the-family service for victims of domestic abuse with complex needs and their children;
- Ensure high-risk victims are effectively supported through the Multi-Agency Risk Assessment Conference process;
- Support victims of domestic abuse to remain in their own homes by providing increased home security improvements through the Sanctuary scheme;

- Work with Probation and law enforcement colleagues through offender management programmes to moderate the behaviour of those involved in violent offending.

What is our aim for change by the end of this Strategy?

- Reduction in violent crime (non-domestic) recorded in each Borough;
- Increased accessing of services by victims of domestic abuse (particularly from BAME and other hard to reach victims);
- An increased awareness of the strands of VAWG and support services available;
- Improvement in the detection rate of violence with injury offences (non-domestic);
- Successful monitoring and behaviour change of known offenders through the Integrated Offender Management Programme;
- Sound intelligence picture of hot spot locations for violent offences in public places (non-domestic);
- Reduction in violence with injury offences within hotspot locations and night-time economy areas.

Priority Performance Indicators for 2019-20 Quarterly CSP Monitoring

- Number of domestic abuse reports to Police;
- Number of domestic abuse victims accessing local services;
- Rate of prosecutions of offenders of domestic abuse;
- Number of violent offences recorded in each Borough;
- Number of violence with injury offences in hotspot locations;
- Number of serious violent offences.

Priority 2: Persistent Anti-Social Behaviour and Environmental Crime

Why is this important?

Preventing and tackling persistent Anti-social Behaviour (ASB) is frequently identified as a key priority by local communities because of the impact it has on quality of life within neighbourhoods. Within town centres, ASB also has the ability to negatively impact local businesses and is particularly damaging to public perceptions of local areas. Tackling ASB is resource-intensive and benefits significantly from multi-agency working, particularly where the ASB is intrinsically linked to drug and alcohol misuse as well as fly-tipping - a specific issue that effects both our rural and urban communities.

Although the Partnership identifies ASB as a key priority, both Dartford and Gravesham have seen significant decreases in the recorded levels of ASB in the year ending 30 September 2018, which are mirrored across the county. Dartford has seen a decrease of 26.7% of recorded ASB incidents and Gravesham had a decrease of 22.3%. It is clear from our public consultation exercise that ASB still remains the primary community safety concern for local people and therefore, the Partnership needs to continue to work towards reducing the problems associated with ASB further.

Fly-tipping is seen as a key manifestation of ASB and potentially, a factor in crime and fear of crime and is frequently linked to deliberate fire-setting. It has an adverse effect on the quality of life of local residents and also affects economic development/tourism, making areas less attractive to potential investors and visitors. Both Dartford and Gravesham Councils work with a range of agencies in taking enforcement action against offenders whenever possible through both reactive investigations and proactive operations.

What is our focus?

- To continue to reduce ASB incidents by taking a holistic approach in each case looking at any underlining issues which need to be addressed;
- To utilise the powers and legislation available to Councils and other partners to combat ASB;
- To continue to prosecute individuals that fly-tip in our Boroughs;
- To reduce the number of deliberate and accidental fires.

The first 12 months: 2019-20 – What will we do?

- Undertake proactive operations in partnership with the police in relation to fly-tipping, by checking for waste carrier licenses etc.
- Working in partnership to support victims of ASB and to assist perpetrators in changing their behaviours;
- Awareness raising via Kent Fire and Rescue Service around accidental fires and fire safety;

What is our aim for change by the end of this Strategy?

- Reduction in ASB incidents recorded in each Borough;
- Increase in percentage of Fixed Penalty Notices issued for fly-tipping offences;
- Reduction in fly-tipping incidents;
- Reduction in deliberate fires.

Priority Performance Indicators for 2019-20 Quarterly CSP Monitoring

- Number of recorded anti-social behaviour incidents reported to the Police in the each Borough;
- Number of active ASB cases being investigated by each District;
- Number of graffiti incidents;
- Number of fly-tipping incidents;
- Number of fly-tipping prosecutions;
- Number of ASB incidents reported;
- Number of Community Protection Warnings/Notices and Acceptable Behaviour Agreements issued;
- Number of deliberate fires;
- Numbers of repeat victims of ASB;
- Numbers of repeat locations for ASB;
- Numbers of reported incidents of fly-tipping.

Priority 3: Preventing Offending and Reducing Re-offending

Why is this important?

Preventing offending has been identified as a priority because the Partnership understands the detrimental impact that crime has on victims, their families and local communities. The focus of partnership activity will aim to disrupt Serious and Organised Crime and prevent and reduce youth offending (which will encompass gang-related crime). Serious and Organised Crime and gang-related youth violence are now recognised as national priorities by Central Government and there is an expectation that Community Safety Partnerships will have a much more proactive role than has historically been the case, in working more closely with law enforcement agencies that have traditionally been the primary organisations to tackle these issues.

Integrated Offender Management (IOM) is a multi-agency process for identifying those offenders who have or are causing harm to communities through their criminal and/or anti-social behaviour. Multi-agency expertise and resources are pooled to try to identify ways of reducing reoffending. The most common priority groupings both at county and local level related to involvement in Serious and Acquisitive Crime - equivalent to 64.1% of the total cohort of prolific offenders locally.

Government has also recently highlighted that knife crime is increasing nationally and with that in mind both Boroughs are working closely with Trading Standards (KCC) targeting knife sales to underage children, through work with local shops and supporting them with their 'Challenge 25' policies and through test purchasing to ensure that retailers are abiding to their own policies and legal responsibilities.

What is our focus?

- To continue to improve our intelligence picture of Serious and Organised Crime Groups, and gang-related activity in our areas;
- To work in partnership with appropriate agencies to address re-offending and take a holistic approach, by addressing the reasons why individuals re-offend;
- Raise awareness of gangs and knife crime including and appreciation of the consequences and risks of carrying knives/other weapons both amongst young people and their families but also to increase the understanding of this issue amongst front line professionals;
- To safeguard potential victims of crime.

The first 12 months: 2019-20 – What will we do?

- Continue with a multi-agency approach to disrupting Serious and Organised crime using powers and authorisations that are available to different agencies;
- Deliver training to frontline staff on how to best work with young people involved in gangs including identifying when young people may be involved in gangs and exit strategies;
- Working in partnership to help support the Kent and Medway Gang Strategy;
- Work with Probation and law enforcement colleagues through offender management programmes to moderate the behaviour of those that have been known to offend/re-offend;
- Support victims of crime via other agencies such as Neighbourhood Watch, whilst offering advice on scams to those identified as more vulnerable to becoming victims of Serious and Organised Crime;
- Work with and support Kent Trading Standards with knife test purchase operations whilst raising the importance of 'Challenge 25' with local businesses.

What is our aim for change by the end of this Strategy?

- Reduction in crime recorded in each Borough;
- Reduction in the number of young people committing crime;
- An increased awareness gangs to young people to avoid them becoming involved in or targeted by gangs;
- Improvement in the detection and disruption of Organised Crime Groups;
- Successful monitoring and behaviour change of known offenders through the Integrated Offender Management Programme;
- Sound intelligence picture of the current gangs operating in and around our Boroughs.

Priority Performance Indicators for 2019-20 Quarterly CSP Monitoring

- Number of services users who re-offend;
- Number of total crimes committed in each borough;
- Number of young people committing crime.

Priority 4: Protecting Vulnerable People and Strengthening Communities

Why is this important?

CSP members share Safeguarding responsibilities to protect people who are more vulnerable to harm for a variety of reasons. In addition to those who are susceptible to harm through such factors as their age, disability, gender, religion and belief, or sexual orientation there are those who find themselves in specific circumstances that make them vulnerable to being victimised repeatedly.

Recent work in both Dartford and Gravesham has reinforced the value of a joint, multi-agency approach of delivering tailored interventions to identified individuals and/or families. Vulnerable people are frequently repeat victims; ensuring they receive relevant and timely support will help to bring offenders to justice and ultimately also reduce demand on services.

Our Boroughs are already the most diverse in the county and given level of housebuilding that is currently being enjoyed across the area, this is set to continue as new communities move into North Kent. Experience from other parts of the country indicates that such rapid change presents a risk of increased hate crime and a threat to community resilience and cohesion which is already heightened.

In addition, both Local Authorities have a legal duty to take steps to reduce the threats posed by terrorism and extremism as well as mitigating against security risks.

What is our focus?

- To continue to raise awareness of hate crime, in all its forms, to increase victim confidence and seek support;
- To understand the changing demography of the CSP area;
- To continue to provide events that are accessible to all and strengthen communities;
- To raise awareness amongst children who are vulnerable by age to criminal exploitation;
- To safeguard vulnerable children who are directly at risk of harm;
- To protect specific communities who are more vulnerable to particular crimes.

The first 12 months: 2019-20 – What will we do?

- Produce an ethno cultural profile and to understand how both Districts are changing using the Origins Database as provided through the recently successful Migration Fund bid;
- Identify and support specific communities who are at high risk of domestic burglaries;
- Ensure both Districts' Vulnerability Fora continue to support those in need through the implementation of multi-agency plans;
- Work with KCC to take maximum advantage of £1.3m secured from the Government's Supporting Families against Youth Crime Fund to help prevent young people becoming involved in gangs and youth violence;
- To continue to develop collaborative working with London Boroughs to share operational intelligence about Child Criminal Exploitation;
- To continue to support the Kent Prevent Duty Delivery Board and a County Channel Panel as required by the Prevent Duty contained within the Counter-Terrorism and Security Act 2015;
- Provide training to frontline staff in relation to Child Criminal Exploitation;
- Continue to work with schools in relation to Student Financial exploitation;
- Relaunch the Shop Safe scheme (Dartford) and continue with the Scheme in Gravesham;

- Provide support to members of the community who are vulnerable due to their individual circumstance;
- Ensure that the emerging communities are aware Community Events being held.

What is our aim for change by the end of this Strategy?

- An understanding of the changing demographic profile of both Districts, with effective community cohesion between long standing and new communities;
- Increase in confidence of hate crime victims resulting in greater reporting of hate crime and the number of offenders brought to justice;
- Established working practices between us and neighbouring London Boroughs that identify and mitigate risks caused through the safeguarding moves of families whose child/children have been criminally exploited.

Priority Performance Indicators for 2019-20 Quarterly CSP Monitoring

- Number of reported hate crimes reported;
- Percentage of hate crimes detected;
- Number of Safe and Well Visits conducted by Kent Fire and Rescue;
- Number of Community Events held;
- Number of homeless applicants placed in Temporary Accommodation;
- Number of households where homelessness has been prevented;
- Number of Prevent and Channel Referrals.

Key Contacts

<p>Dartford Borough Council Community Safety Unit Civic Centre Home Gardens Dartford Kent DA1 1DR Tel. 01322 343434</p>	<p>Gravesham Borough Council Community Safety Unit Civic Centre Windmill Street Gravesend Kent DA12 1AU Tel. 01474 337000 www.gravesham.gov.uk</p>
<p>Kent Police Thames Way Northfleet Gravesend Kent DA11 8BD Tel. 01474 369055 www.kent.police.uk</p>	<p>Kent County Council Community Safety Unit Invicta House Maidstone Kent ME14 1XX Tel. 08458 247247 www.kent.gov.uk</p>
<p>Kent Fire and Rescue Service The Godlands Straw Mill Hill Maidstone Kent ME15 6XB Tel. 01622 692121 www.kent.fire-uk.org</p>	<p>Kent, Surrey & Sussex Community Rehabilitation Company Joynes House New Road Gravesend Kent DA11 0AT Tel. 01474 569546 www.ksscrc.co.uk</p>
<p>NHS Dartford, Gravesham & Swanley Clinical Commissioning Group 2nd Floor, Gravesham Civic Centre Windmill Street Gravesend Kent DA12 1AU Tel. 03000 424903 www.dartfordgraveshamswanleyccg.nhs.uk</p>	<p>Kent Police and Crime Commissioner 1st Floor, Gail House Lower Stone Street Maidstone Kent ME15 6NB Tel. 01622 677055 www.kent-pcc.gov.uk</p>